

## Specialist tape cassettes

In addition to the extensive range of TZe tapes in various colours and sizes, specialist tapes for industrial use have been developed for specific labelling tasks.

### Flexible-ID Tape

Use on: Curved surfaces or itself



- Wrapping/flagging individual wires
- Sharp bends
- Cylindrical surfaces

### Strong Adhesive Tape

Use on: Uneven, rough and textured surfaces



- Painted metal
- Powder-coated surfaces
- Utility cabinets

### Heat-shrink tube

Use on: Wires and cables



- Shrinks and grips cable when heat is applied
- Permanent
- Durable

## Technical Specifications

### Items included

PT-E300 labelling machine  
Lithium-ion battery  
AC adapter  
18mm black on yellow strong adhesive laminated label cassette (8m)  
User guide  
Wrist strap  
Carry case

### Hardware

Housing dimensions (mm)	133 (w) x 220 (h) x 74 (d)
Housing weight	740g
Tape size/type	TZe tape: 3.5, 6, 9, 12, 18mm
Print resolution	180 dpi
Max. print height	15.8mm
Max. print speed	20mm / sec
Cutter type	Manual: Cutter blade
Keyboard type	PC style with numeric keypad
Number of keys	64
LCD display	15 characters x 3 line graphic
LCD backlight	Yes
LCD size	67mm x 40mm
Print preview	Yes
Text buffer	Max. 200 chrs
Label memory	50 memory locations with up to 2,400 characters total
Power	Lithium-ion battery (supplied) AC adapter (supplied) 6 x AA (LR6/HR6) alkaline batteries (not supplied)

### Built-in software

Built-in fonts	7
Built-in symbols	384
Character sizes	7: (6, 9, 12, 18, 24, 36, 42 pt)
Character widths	3: (extended, medium, condensed)
Font styles	9
Frames	7
Underline	Yes
Max. number of lines	5
Horizontal alignment	Automatic length labels: left aligned Pre-set label length: centre aligned
Tape length setting	Yes (25-300mm)
Tape margin setting	Narrow, half, full, chain print
Tab function	Yes
Specialist labelling functions	Cable wrap, cable flag, face place, sequential numbering, patch panel, punch block
Automatic numbering	Yes
Mirror printing	No
Vertical printing	Yes
Barcode creation	Yes: (CODE39, CODE 128, EAN13, EAN8, ITF 2/5, UPC-A, UPC-E, CODABAR, GS1-128/UCC/EAN128)
Copy (repeat) printing	Yes: (1-9)
Print preview	Yes: (graphic preview)
Auto power off	Yes
Unit change	Yes: (inch/mm)
Language change	20 languages: (English, German, French, Spanish, Portuguese, Italian, Dutch, Danish, Norwegian, Swedish, Finnish, Hungarian, Czech, Polish, Romanian, Slovenian, Slovakian, Croatian, Turkish, Brazilian Portuguese)

Contact:

**brother**  
at your side

Brother International Europe  
Tame Street, Audenshaw  
Manchester, M34 5JE  
United Kingdom

**P-touch**  
E300VP

**brother**  
at your side

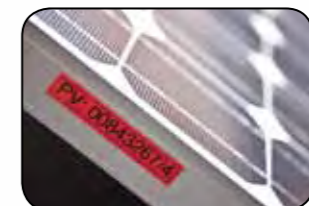


## Industrial Labelling Machine

With dedicated functions for common labelling applications, easily create durable labels for faceplates, cables, consumer units and other electrical and datacom installations.

[www.brother.eu](http://www.brother.eu)

- Large backlit graphic display
- Dedicated function keys to easily create labels
- Includes tape cassette, AC adapter and carry case
- Prints 3.5, 6, 9, 12 & 18mm labels



The P-touch E300VP with its easy-to-use features ensures that your work is labelled professionally.



**P-touch**  
E300VP

## P-touch E300VP

The P-touch E300VP is an indispensable tool for all electricians and datacom installers and comes complete with a lithium-ion rechargeable battery and AC adapter, all housed in a durable carry case. The large backlit graphic LCD, standard PC style keyboard and specialised functions have been developed to make common industrial labelling tasks quick and easy. Leave a professional impression by creating high quality durable labels for your installations.



### Prints labels 3.5 to 18mm in width

Print labels in various widths from 3.5 to 18mm to suit any space.



### Face plate

Label socket outlets, network points and telephone extension faceplates for quick identification.



### Cable wrap : Cable flag

Identify cables quickly with easy-to-read labels.



### 9 barcode protocols

Include barcodes for added security and safety.



### Large backlit graphic LCD

Easily view symbols and preview your label before printing.



### Patch Panel

Create perfectly sized port identification labels.



### Sequential numbering

Print labels containing a sequence of numbers or letters.



### 384 built-in symbols

Includes common electrical, datacom, AV, security and safety symbols.

## P-touch laminated labels – designed to last

Brother P-touch laminated TZe tapes are available in many different colours and sizes. The thermal transfer ink is sandwiched between two protective layers of PET (polyester film), protecting the text against the effects of liquids, abrasion, temperature, chemicals and sunlight. As the labels have been tested to the extreme, you can be confident of a professional quality label that has been designed to last.



Laminated



Temperature Resistant



Water Resistant



Fade Resistant



Abrasion Resistant



Chemical Resistant



Easy Peel



Strong Adhesion